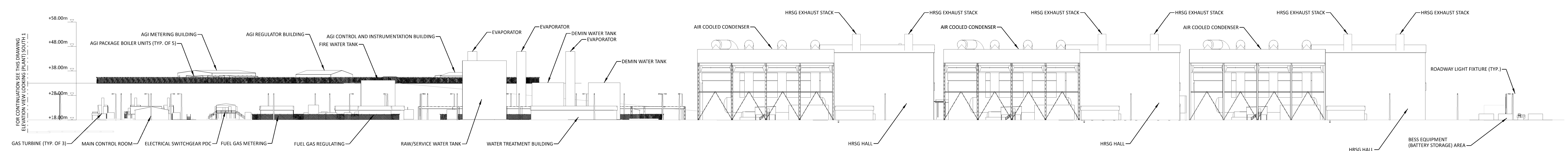
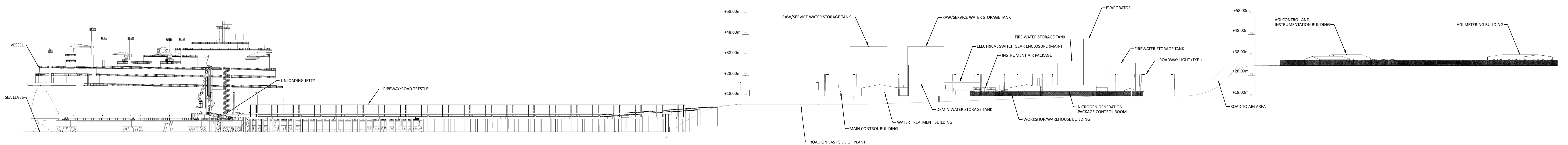


ELEVATION VIEW LOOKING  
(PLANT) SOUTH 1



ELEVATION VIEW LOOKING  
(PLANT) SOUTH 2

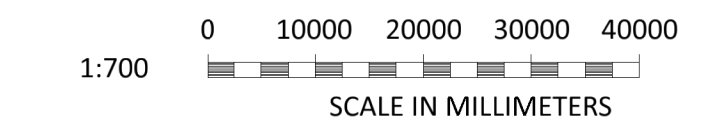


LNG AREA ELEVATION VIEW LOOKING  
(PLANT) EAST

**NOT TO BE USED  
FOR CONSTRUCTION**  
THE DISTRIBUTION AND USE OF THE NATIVE  
FORMAT CAD FILE OF THIS DRAWING IS  
UNCONTROLLED. THE USER SHALL VERIFY  
TRACEABILITY OF THIS DRAWING TO THE LATEST  
CONTROLLED VERSION.

198291-SS-A4101-15.07.21  
 08/23/2021 04:47 PM  
 198291-SS-A4101-15.07.21

NO	DATE	REVISIONS AND RECORD OF ISSUE	TRC	DIL	OAC	APP
0	18/JUN/2021	ISSUED FOR PLANNING				
			DRN	DES	CHK	PDE



BLACK & VEATCH CORP HEADQUARTERS:  
11401 LAMAR AVENUE, OVERLAND PARK,  
KANSAS, USA

**BLACK & VEATCH**

DRAWN: \_\_\_\_\_  
CHECKED: \_\_\_\_\_  
DATE: \_\_\_\_\_

SHANNON LNG LIMITED  
SHANNON TECHNOLOGY AND ENERGY PARK (STEP)  
SITE BUILDINGS CONTIGUOUS - ELEVATION

PROJECT	DRAWING NUMBER	REV
SHANNON LNG LIMITED SHANNON TECHNOLOGY AND ENERGY PARK (STEP) SITE BUILDINGS CONTIGUOUS - ELEVATION	198291-SS-A4101	0
AREA		