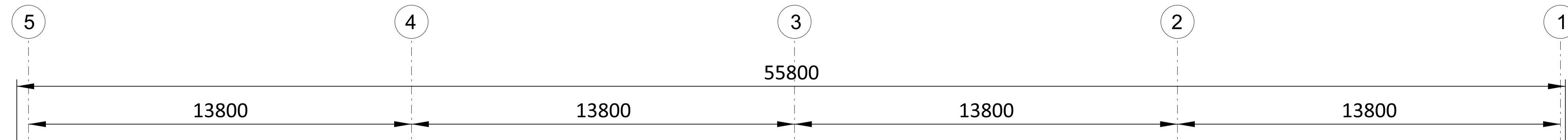


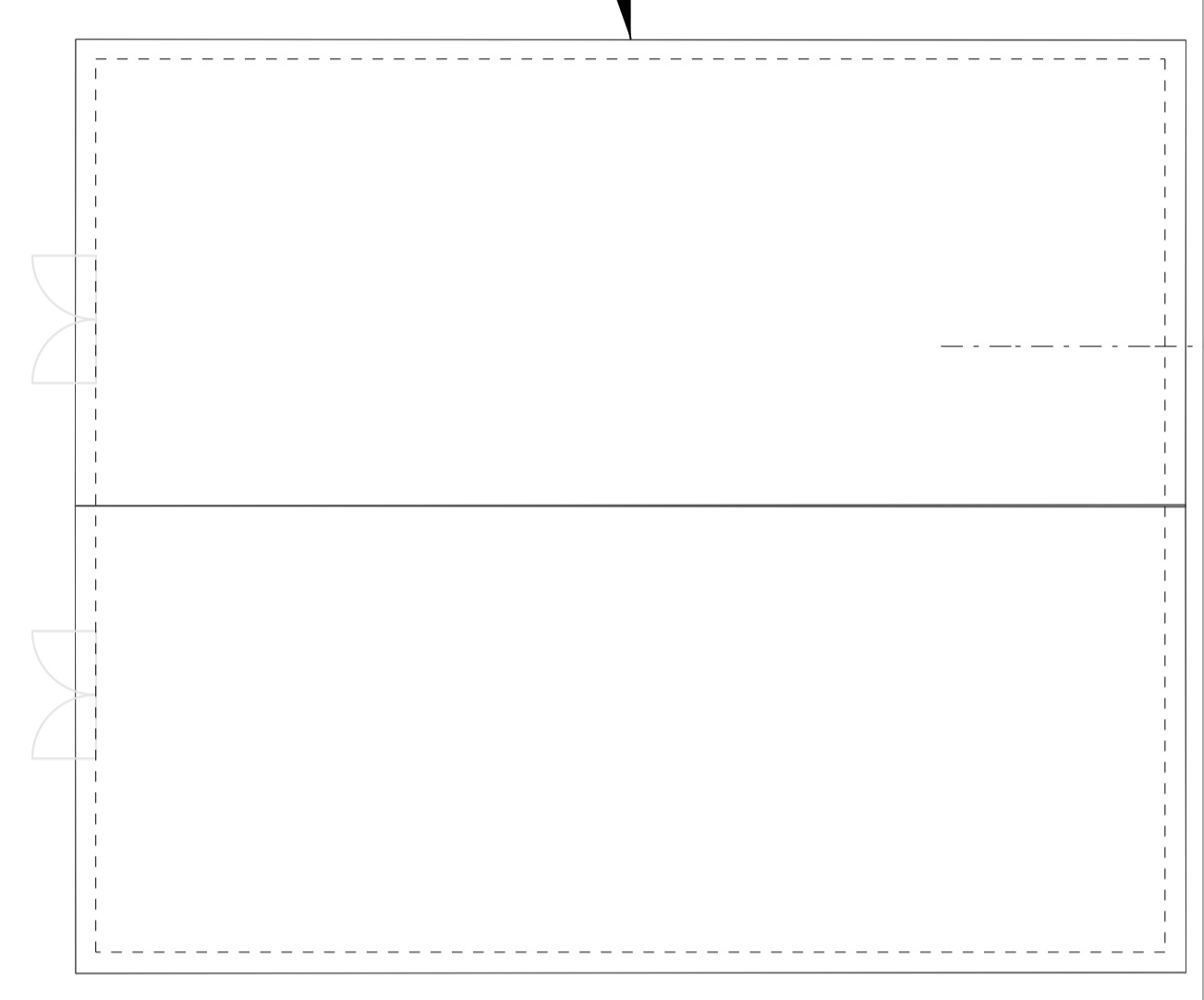
1 2 3 4 5 6 7 8 9 10



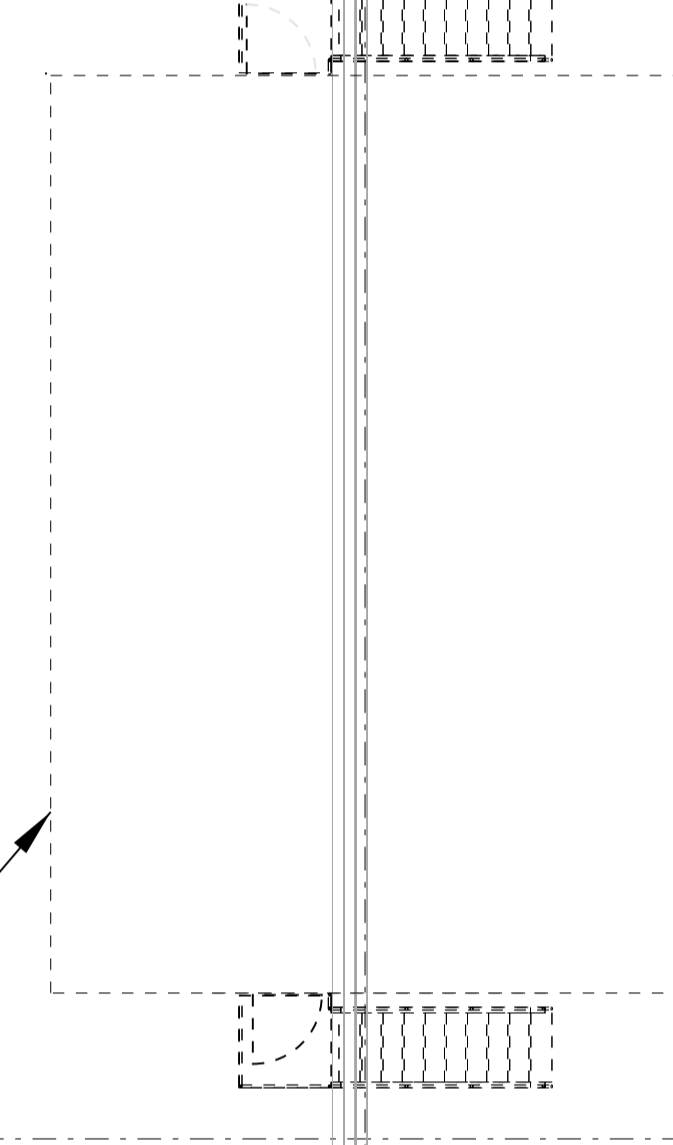
- NOTES:
1. THE ENCLOSED DESIGN IS FOR PLANNING PURPOSES ONLY AND NOT FOR CONSTRUCTION. EQUIPMENT LOCATIONS ARE INDICATIVE ONLY AND ARE SUBJECT TO CHANGE WITHIN BUILDING.
  2. AIR COOLED CONDENSER, COLLECTION TANK, CONDENSATE POLISHER ENCLOSURE AND POWER DISTRIBUTION CENTER TO BE COLOUR GREY-OLIVE, RAL 6006. AIR COOLER STEAM DUCT PIPING TO BE COLOUR TRAFFIC GREY, RAL 7043.



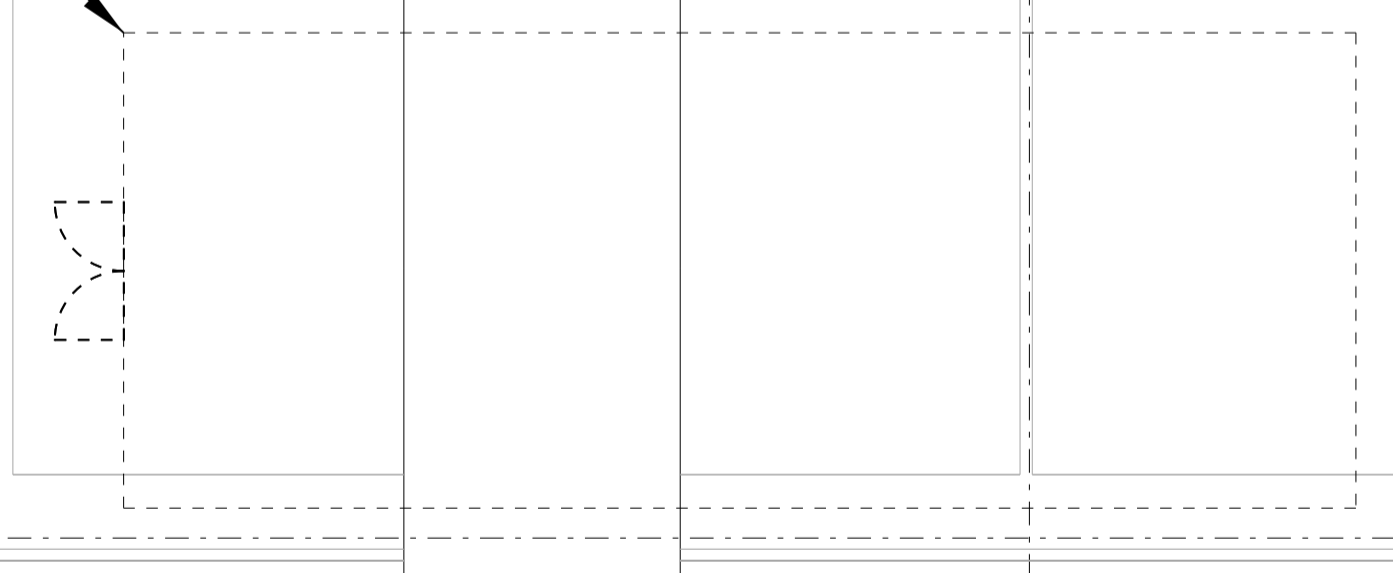
ACC AIR EXTRACTION  
EQUIPMENT ENCLOSURE  
(REFER TO 198291-SS-A4032)



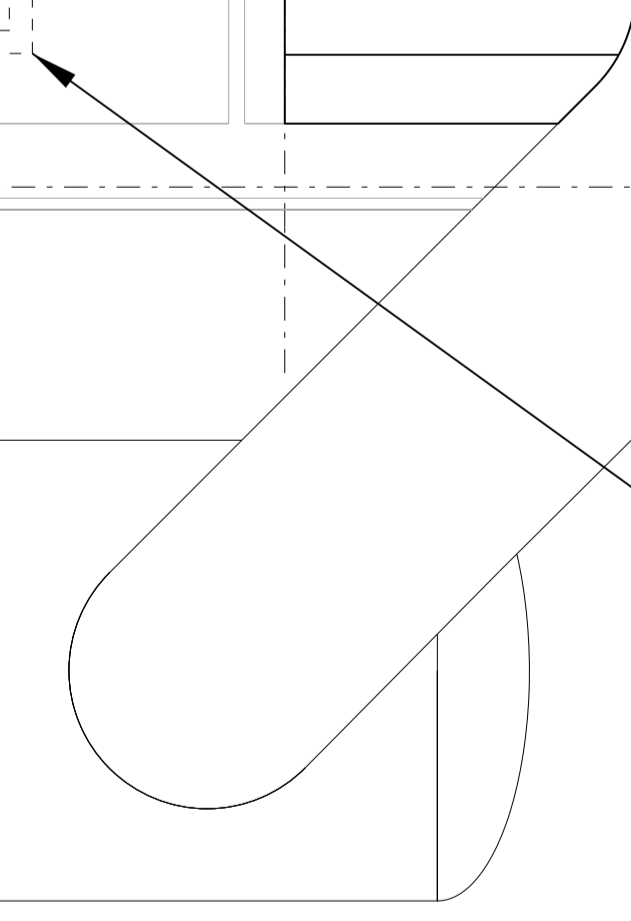
ACC ELECTRICAL PDC  
(REFER TO 198291-SS-A4034)



CONDENSATE POLISHING  
EQUIPMENT ENCLOSURE  
(REFER TO 198291-SS-A4033)

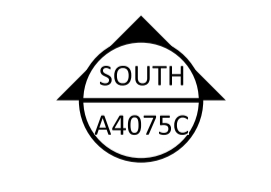


CONDENSATE COLLECTION TANK

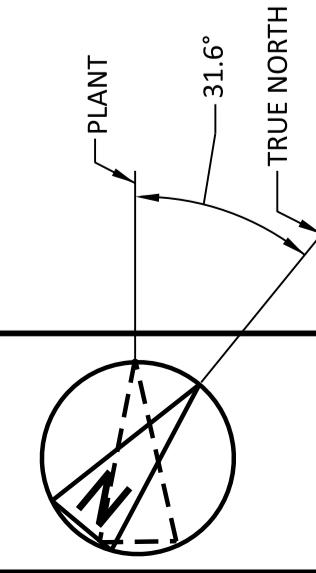


GROSS AREA = 48.6m X 55.8m = 2711.88m<sup>2</sup>

N:148595.3A N:148645.8B N:148698.3C  
E:102274.0A E:102365.3B E:102442.0C

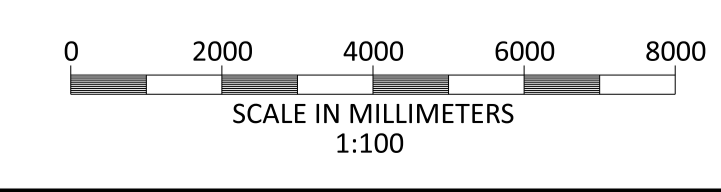


STEAM DUCT DRAIN  
POT PUMP SKID



198291-SS-A4075A-1  
 08/18/2021 09:50 AM  
 198291-SS-A4075A-1

NO	DATE	REVISIONS AND RECORD OF ISSUE	DRN	DES	CHK	PDE	APP
1	18/JUN/2021	ISSUED FOR PLANNING	TMC	DIL		DAC	
0	30/APR/2021	ISSUED FOR PLANNING	TMC	DIL		DAC	



BLACK & VEATCH CORP HEADQUARTERS:  
11401 LAMAR AVENUE, OVERLAND PARK,  
KANSAS, USA

**BLACK & VEATCH**

CHECKED: \_\_\_\_\_ DATE: \_\_\_\_\_  
DRAWN: \_\_\_\_\_

SHANNON LNG LIMITED  
SHANNON TECHNOLOGY AND ENERGY PARK (STEP)  
AIR COOLED CONDENSER  
PLAN

PROJECT	DRAWING NUMBER	REV
198291-SS-A4075A		1
CODE	AREA	

**NOT TO BE USED  
FOR CONSTRUCTION**

THE DISTRIBUTION AND USE OF THE NATIVE  
FORMAT CAD FILE OF THIS DRAWING IS  
UNCONTROLLED. THE USER SHALL VERIFY  
TRACEABILITY OF THIS DRAWING TO THE LATEST  
CONTROLLED VERSION.