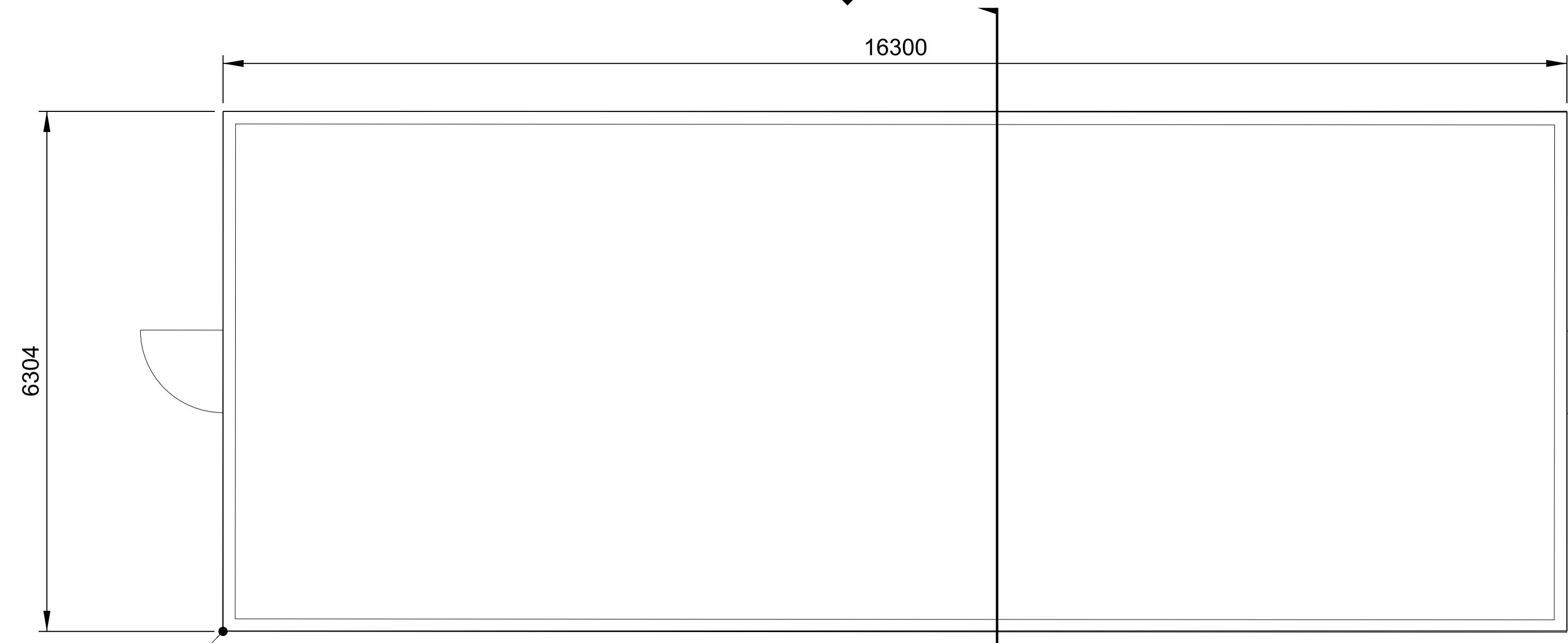
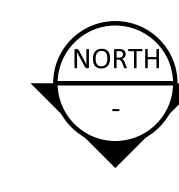
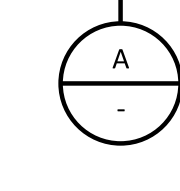
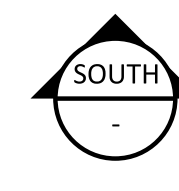




ROOF PLAN

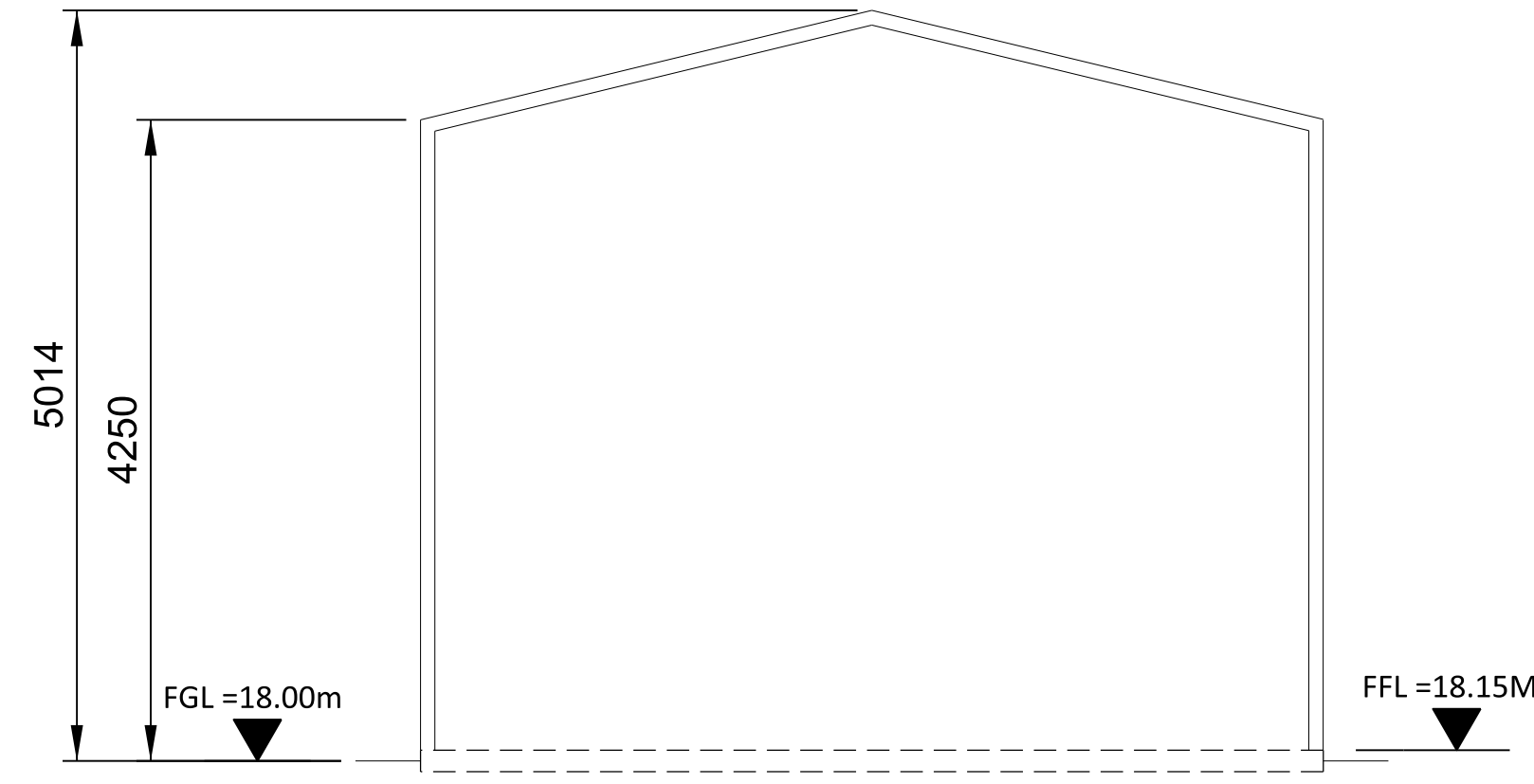


FLOOR PLAN

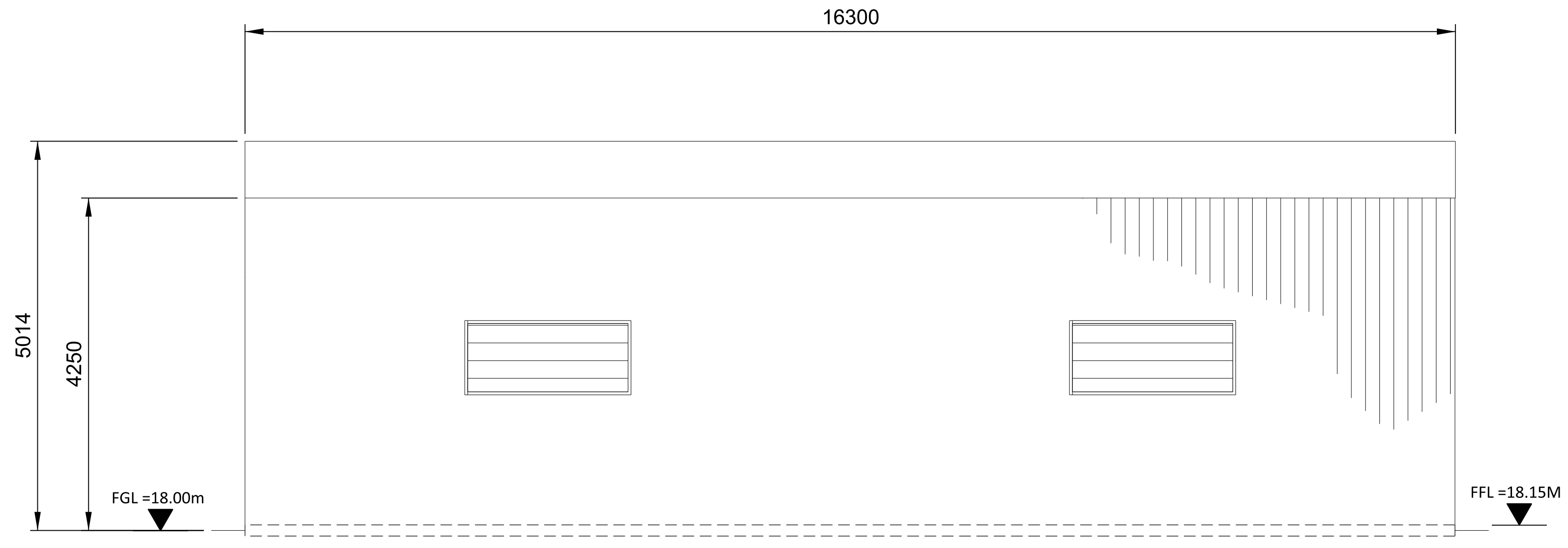


GROSS AREA = 6.3m X 16.3m = 103m<sup>2</sup>

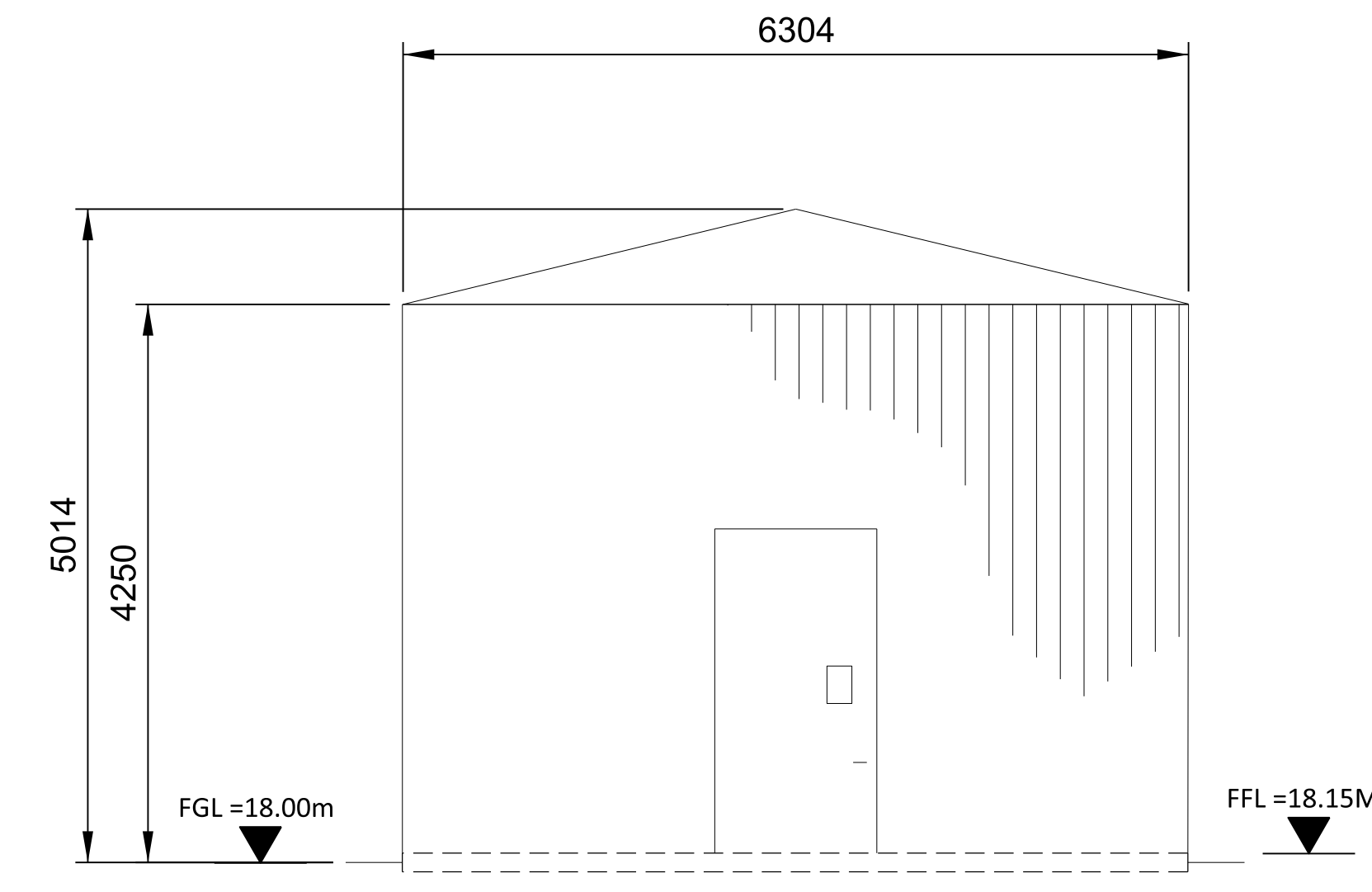
N: 148597.3A, 148647.8B, 148700.3C  
E: 102275.9A, 102358.3B, 102443.9C



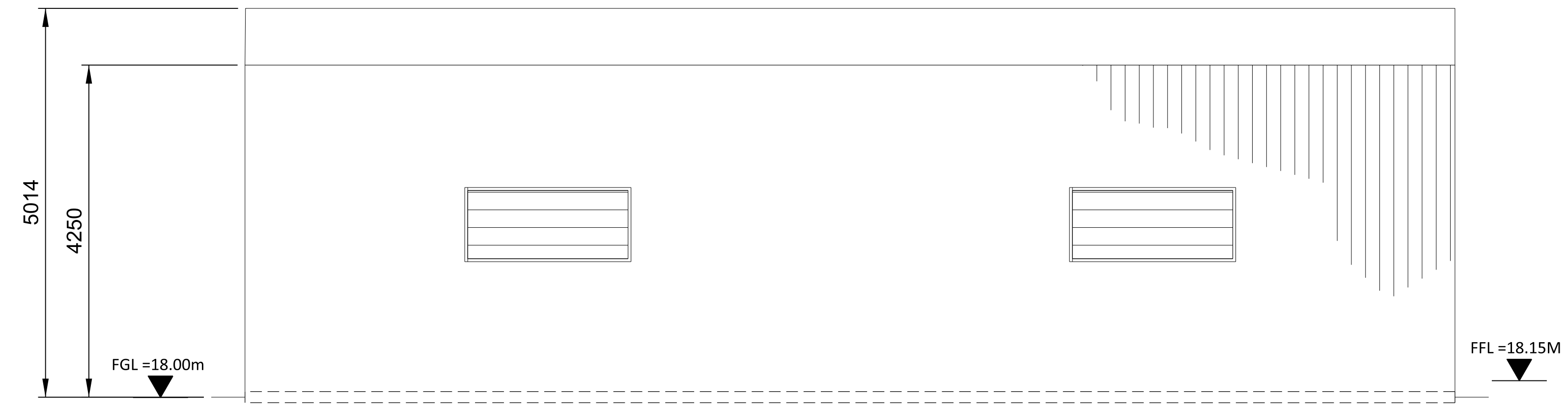
SECTION A-A



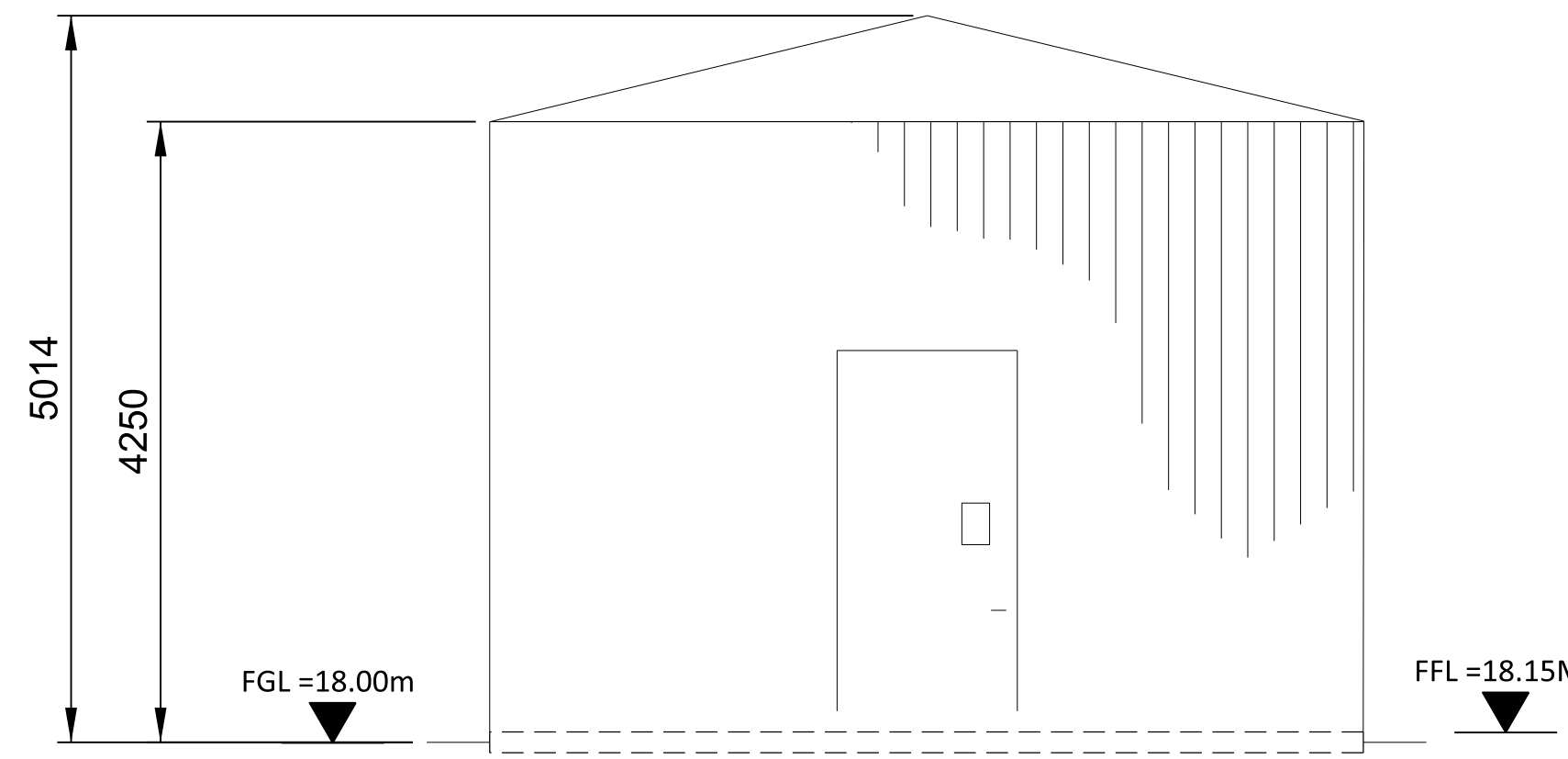
SOUTH ELEVATION



EAST ELEVATION



NORTH ELEVATION



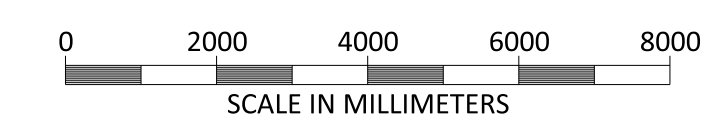
WEST ELEVATION

- NOTES:
1. ROOF - COMPOSITE PVC/PLASTISOL LAMINATED INSULATED MEMBRANE WITH INTEGRAL STEEL SUPPORT DECKING, COLOUR GREY-OLIVE, RAL 6006.
  2. WALLS - COMPOSITE PVC/PLASTISOL LAMINATED INSULATED VERTICAL PROFILED MODULAR STEEL CLADDING, COLOUR GREY-OLIVE, RAL 6006.
  3. FASCIAS & TRIMS, INCLUDING DOORS, WINDOWS, VENTILATION OPENINGS & SERVICES PENETRATION FRAMES TO BE COLOUR GREY-OLIVE, RAL 6006.
  4. THE ENCLOSED DESIGN IS FOR PLANNING PURPOSES ONLY AND NOT FOR CONSTRUCTION. EQUIPMENT LOCATIONS ARE INDICATIVE ONLY AND ARE SUBJECT TO CHANGE WITHIN BUILDING.

**NOT TO BE USED FOR CONSTRUCTION**  
THE DISTRIBUTION AND USE OF THE NATIVE FORMAT CAD FILE OF THIS DRAWING IS UNCONTROLLED. THE USER SHALL VERIFY TRACEABILITY OF THIS DRAWING TO THE LATEST CONTROLLED VERSION.

07/27/2021 01:16 PM  
 15:21:11  
 15:21:11  
 15:21:11

NO	DATE	REVISIONS AND RECORD OF ISSUE	DRN	DES	CHK	PDE	APP
1	18/JUN/2021	ISSUED FOR PLANNING	TMC	DIL		DAC	
0	30/APR/2021	ISSUED FOR PLANNING	TMC	DIL		DAC	



BLACK & VEATCH CORP HEADQUARTERS:  
11401 LAMAR AVENUE, OVERLAND PARK,  
KANSAS, USA

**BLACK & VEATCH**

CHECKED: \_\_\_\_\_ DATE: \_\_\_\_\_  
DRAWN: \_\_\_\_\_

SHANNON LNG LIMITED  
SHANNON TECHNOLOGY AND ENERGY PARK (STEP)  
CONDENSATE POLISHING EQUIPMENT ENCLOSURE  
PLAN ELEVATIONS AND SECTION

PROJECT	DRAWING NUMBER	REV
198291-SS-A4033		1