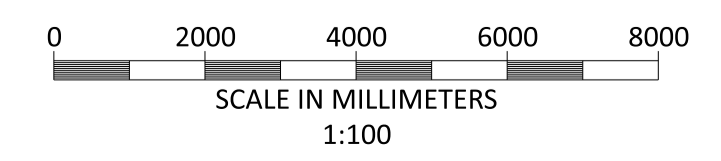
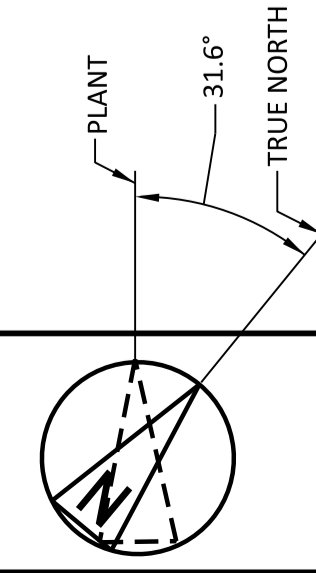


WEST ELEVATION
SEE DRAWING 198291-SS-A4031A

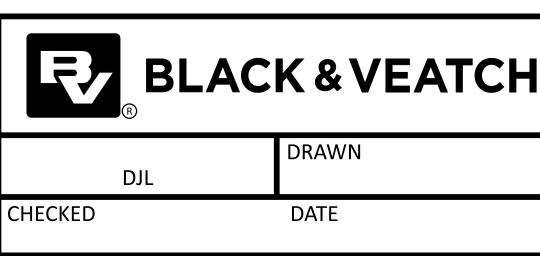
- NOTES:
1. ROOF - COMPOSITE PVC/PLASTISOL LAMINATED INSULATED MEMBRANE WITH INTEGRAL STEEL SUPPORT DECKING, COLOUR CHROME GREEN, RAL 6020.
 2. WALLS - COMPOSITE PVC/PLASTISOL LAMINATED INSULATED VERTICAL PROFILED MODULAR STEEL CLADDING, COLOUR RESEDA GREEN, RAL 6011 (LOWER TURBINE HALL) & OLIVE GREEN, RAL 6003 (UPPER HRSG AND TURBINE HALL)
 3. FASCIAS & TRIMS, INCLUDING DOORS, WINDOWS, VENTILATION OPENINGS & SERVICES PENETRATION FRAMES TO BE COLOUR TRAFFIC GREY B, RAL 7043.
 4. THE ENCLOSED DESIGN IS FOR PLANNING PURPOSES ONLY AND NOT FOR CONSTRUCTION. EQUIPMENT LOCATIONS ARE INDICATIVE ONLY AND ARE SUBJECT TO CHANGE WITHIN BUILDING.

198291-SS-A4031E.dwg
 28/06/2021 09:54 AM
 PLOT SIZE: 11" x 17"

NO	DATE	REVISIONS AND RECORD OF ISSUE	DRN	DES	CHK	PDE	APP
1	18/JUN/2021	ISSUED FOR PLANNING	TMC	DIL		DAC	
0	30/APR/2021	ISSUED FOR PLANNING	TMC	DIL		DAC	



BLACK & VEATCH CORP HEADQUARTERS:
11401 LAMAR AVENUE, OVERLAND PARK,
KANSAS, USA



SHANNON LNG LIMITED
SHANNON TECHNOLOGY AND ENERGY PARK (STEP)
TURBINE HALL
WEST ELEVATION

PROJECT	DRAWING NUMBER	REV
198291-SS-A4031E		1
CODE	AREA	

NOT TO BE USED FOR CONSTRUCTION
THE DISTRIBUTION AND USE OF THE NATIVE FORMAT CAD FILE OF THIS DRAWING IS UNCONTROLLED. THE USER SHALL VERIFY TRACEABILITY OF THIS DRAWING TO THE LATEST CONTROLLED VERSION.