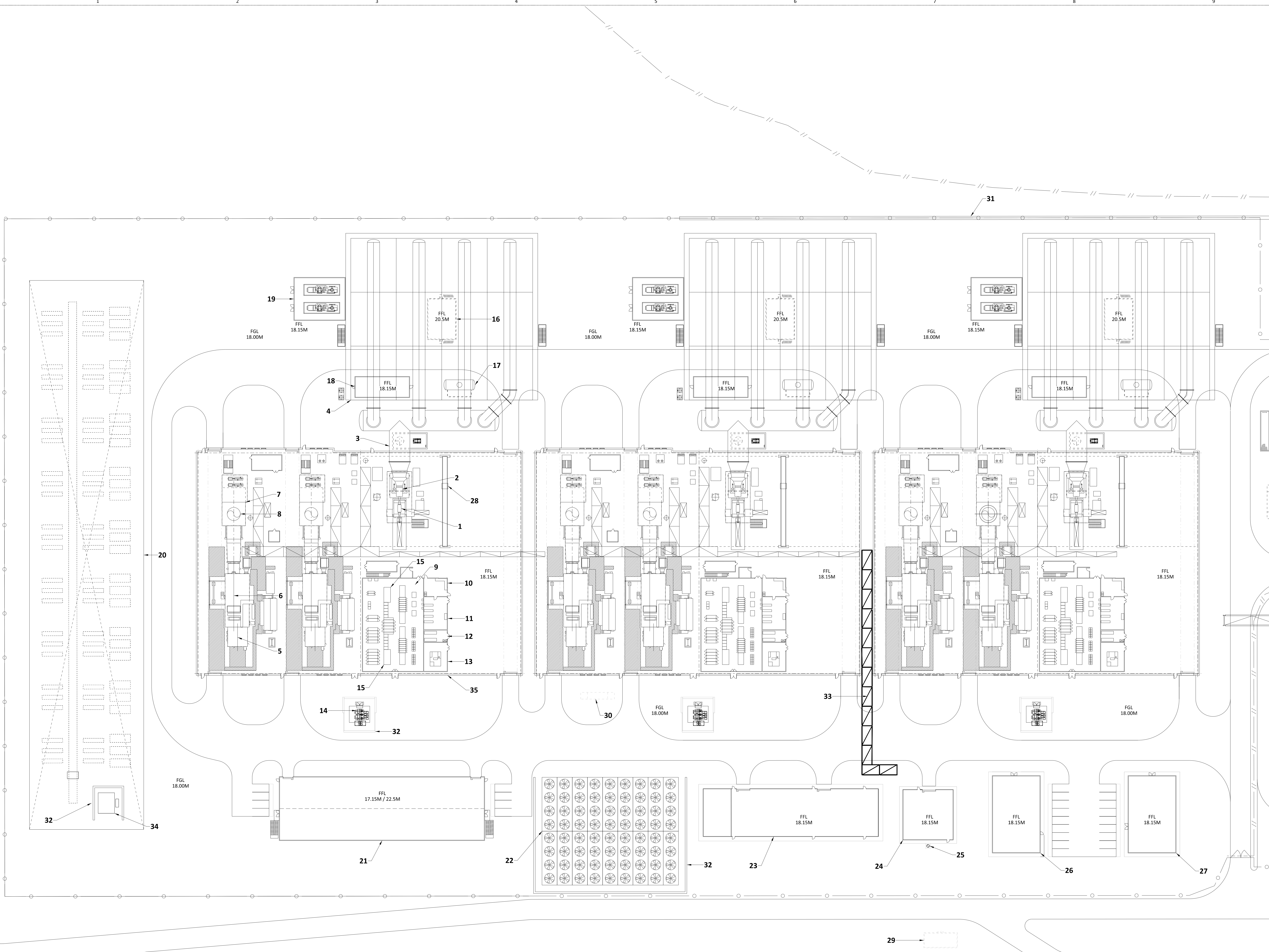


ITEM NO.	EQUIPMENT IDENTIFICATION
1	STEAM TURBINE GENERATOR
2	STEAM TURBINE
3	STEAM TURBINE EXHAUST DUCT
4	AIR COOLED CONDENSER
5	COMBUSTION TURBINE GENERATOR
6	COMBUSTION TURBINE
7	HEAT RECOVERY STEAM GENERATOR
8	HRSG EXHAUST STACK
9	ELECTRICAL EQUIPMENT ROOM
10	AUXILIARY CONTROL ROOM
11	DCS ROOM
12	BATTERIES ROOM
13	STANDBY DIESEL GENERATOR ROOM
14	GENERATOR STEP-UP TRANSFORMER
15	AUXILIARY TRANSFORMER
16	ACC ELECTRICAL EQUIPMENT POWER DISTRIBUTION CENTER
17	CONDENSATE COLLECTION TANK
18	CONDENSATE POLISHING EQUIPMENT ENCLOSURE
19	ACC AIR EXTRACTION EQUIPMENT ENCLOSURE
20	BATTERY ENERGY STORAGE SYSTEM (BESS) EQUIPMENT AREA
21	ELECTRICAL (GIS) SUBSTATION BUILDING
22	AIR COOLED HEAT EXCHANGERS
23	WORKSHOP/STORES/CANTEEN
24	AUXILIARY BOILER BUILDING
25	AUXILIARY BOILER EXHAUST STACK
26	CENTRAL CONTROL/OPERATIONS BUILDING
27	ADMINISTRATION BUILDING
28	OVERHEAD CRANE
29	INDICATIVE ELECTRICAL GRID INTERFACE BUILDING
30	OIL/WATER SEPARATOR
31	RETAINING WALL
32	SOUND RETENTION WALL
33	UTILITY RACK
34	BESS STEP-UP TRANSFORMER
35	TURBINE HALL (TYP OF 3)



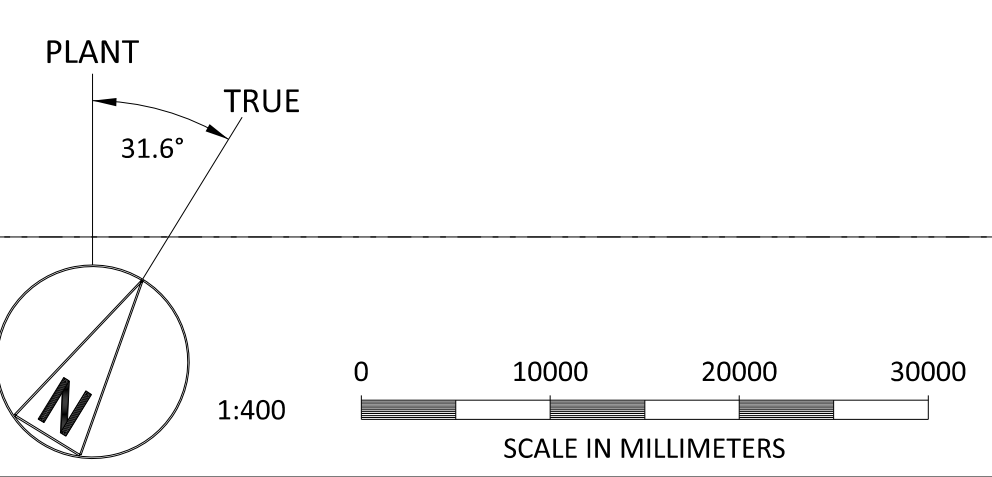
- NOTES.
1. THE FINISHED SURFACE LEVEL (FSL) OR PLATFORM FOR THE POWER PLANT, IS +12M ABOVE ORDINANCE DATUM (AOD).
 2. THE PROPOSED FINISHED GRADE LEVEL (FGL) ARE IDENTIFIED THRU OUT THE PERIMETER OF THE POWER BLOCK AREA.
 3. THE PROPOSED FINISHED FLOOR LEVEL (FFL) ARE IDENTIFIED WITHIN THE BUILDING STRUCTURES.
 4. SEE DRAWING 198291-1GSU-G1003 FOR SITE ARRANGEMENT.

NOT TO BE USED FOR CONSTRUCTION

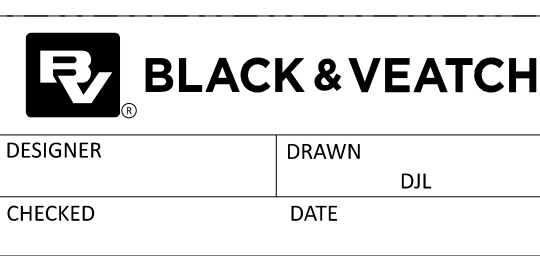
THE DISTRIBUTION AND USE OF THE NATIVE FORMAT CAD FILE OF THIS DRAWING IS UNCONTROLLED. THE USER SHALL VERIFY TRACEABILITY OF THIS DRAWING TO THE LATEST CONTROLLED VERSION.

198291-1GSU-G2001-01-10-2021 05:07 PM
 07/15/2021 05:07 PM
 198291-1GSU-G2001-01-10-2021 05:07 PM

NO	DATE	REVISIONS AND RECORD OF ISSUE	DRN	DES	CHK	PDE	APP
1	18/JUN/2021	ISSUED FOR PLANNING	TMC	DIL		DAC	
0	30/APR/2021	ISSUED FOR PLANNING	TMC	DIL		DAC	



BLACK & VEATCH CORP HEADQUARTERS:
11401 LAMAR AVENUE, OVERLAND PARK,
KANSAS, USA



DESIGNER	DRAWN	DIL	PROJECT	DRAWING NUMBER	REV
CHECKED	DATE		SHANNON LNG LIMITED SHANNON TECHNOLOGY AND ENERGY PARK (STEP) GENERAL ARRANGEMENT COMBINED CYCLE POWER PLANT	198291-1GSU-G2001	1
			AREA		