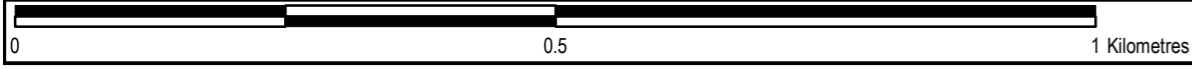
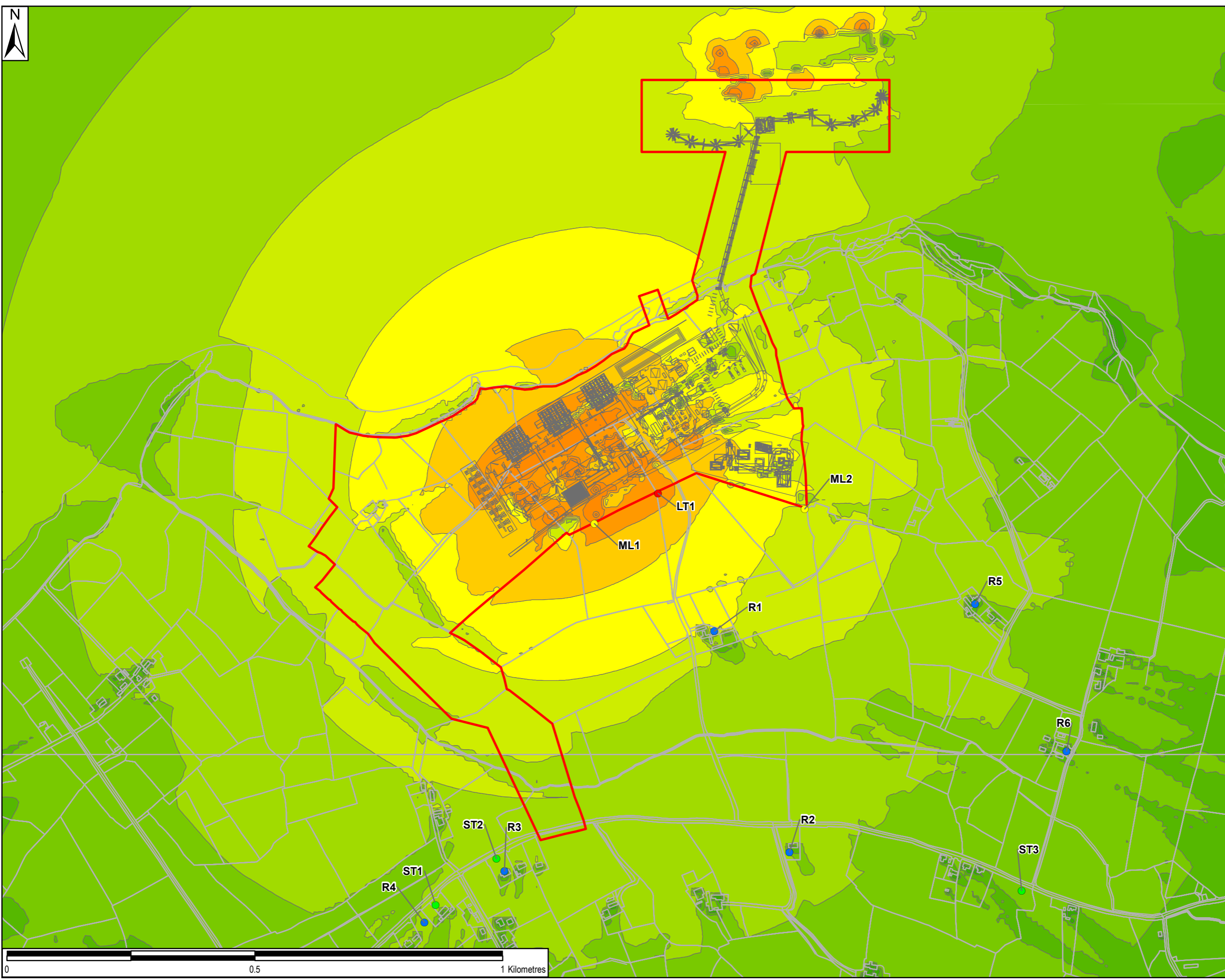


File Name: Z:\UK\IEDBL\A\Jobs\PR-482591_Shannon_LNG_Consultancy_Servic900_CAD_GIS\920_GIS\EAIR\GIS\02_Maps\Noise\Figure F9-7_Operational Scenario 2 Unmitigated.mxd



LEGEND			
Noise Receptors and Monitoring Locations			
●	LT - Long Term Monitoring Location		
●	ML - Operational Scenario Indicative Monitoring Location		
●	R - Receptor Position		
●	ST - Short Term Monitoring Location		
—		Development Boundary	
Operational Scenario 2 Unmitigated			
LAeq,T 10hr dB, 1,5m above ground			
■	<math><35</math>		
■	>=35 and <40		
■	>= 40 and <45		
■	>= 45 and <50		
■	>= 50 and <55		
■	>= 55 and <60		
■	>= 60 and <65		
■	>= 65 and <70		
■	>= 70 and <75		
■	>75		
Copyright:			
Service Layer Credits:			
Purpose of Issue:		FINAL	
Client:		CONFIDENTIAL	
Project Title:		SHANNON TECHNOLOGY AND ENERGY PARK	
Drawing Title:		OPERATIONAL - SCENARIO 2 UNMITIGATED	
Drawn:	Chk'd:	App'd:	Date:
DG	SW	DK	13/07/2021
AECOM Internal Project No:		Scale at A3:	
PR-482591		1:7,000	
THIS DOCUMENT HAS BEEN PREPARED PURSUANT TO AND SUBJECT TO THE TERMS OF AECOM'S APPOINTMENT BY ITS CLIENT. AECOM ACCEPTS NO LIABILITY FOR ANY USE OF THIS DOCUMENT OTHER THAN BY ITS ORIGINAL CLIENT OR FOLLOWING AECOM'S EXPRESS AGREEMENT TO SUCH USE, AND ONLY FOR THE PURPOSES FOR WHICH IT WAS PREPARED AND PROVIDED.			
AECOM 4th Floor, Adelphi Plaza George's Street Upper Dun Laoghaire, Co. Dublin, A96 T827, Ireland T +353-1-238-3100 aecom.com			AECOM
Drawing No:			Rev:
FIGURE F9-7			0